

GUIVISA



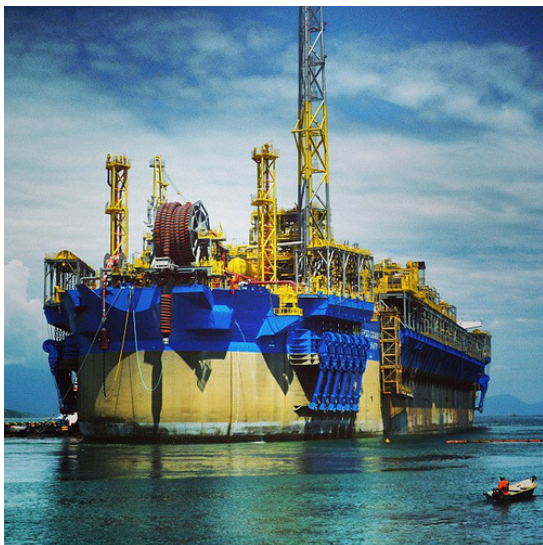
STEEL CASTING FOUNDRY

Avda. Cervantes, 47 - 48970 Basauri BIZKAIA SPAIN
Phone +34 94426 1144
export@guivisa.com

www.guivisa.com

INDEX

1. OVERVIEW	3
2. HISTORY	4
3. MEANS OF PRODUCTION	5
3.1. MOULDING	5
3.1.1. HAND MOULDING / BIG SIZE PIECES	
3.1.2. HAND MOULDING / MEDIUM SIZE PIECES	
3.1.3. AUTOMATIC MOULDING	
3.2 FETTLING	6
3.3 TREATMENTS	6
4. OUR MACHINE SHOPS	6
5. SECTORS	7
6. FABRICATED MATERIALS	10
7. QUALITY AND CERTIFICATIONS	11



OVERVIEW

Activity:	Steel casting
Established:	Year 1949
Turnover:	20 Mio. €
Employees:	90
Market distribution:	20% National 80% Export
Surface:	Total: 16.000 m ² Built: 8.000 m ²
Capacity:	400 Ton/month 4500 Ton/year

- **Manual moulding** pieces: 25Kg – 8000Kg
- **Maximum flask size:** 4.700MM X 2.700MM
- **Semi automatic moulding** pieces: 2Kg - 100Kg
- **2 Machining Shops**



HISTORY

The Company was founded in 1949 and has more than 60 years of experience with all types of steel production. In that time we have produced in excess of 400,000 tons of carbon, alloy and refractory steel.

These experience and wide knowledge in the steel casting made us specialist and allow us to cast the highest standard material and mechanical requirements with the best quality

Guivisa's mission is to deliver quality with competitive costs giving best services to its customers

Since its establishment, Guivisa has always look for the continuous sustainable growing and development, an example of these is the acquisition of two machining shops



9 Tons Furnace



Semi automatic installation

MEANS OF PRODUCTION MOULDING

HAND MOULDING / BIG SIZE PIECES

- Hand molding for pieces **higher than 200kg**
- Products used: silicate, resins, chromite
- **9 Tn furnace** installation
- Sand mixing machines



HAND MOULDING / MEDIUM SIZE PIECES

- Hand molding for pieces **lower than 200kg**
- Products used: silicate, resins, chromite
- **2 Tn. furnace** installation

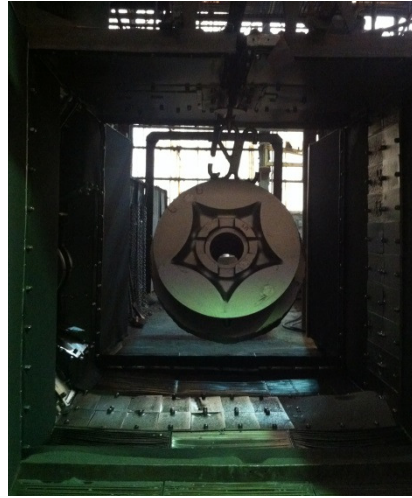
SEMI AUTOMATIC MOULDING

- Semi automatic moulding for large series
- Maximum weight: 100 kg
- Green sand moulding installation (bentonite)
- 80 % recycled sand
- Automatic mold release
- **2 Tn. furnace** installation



FETTLING

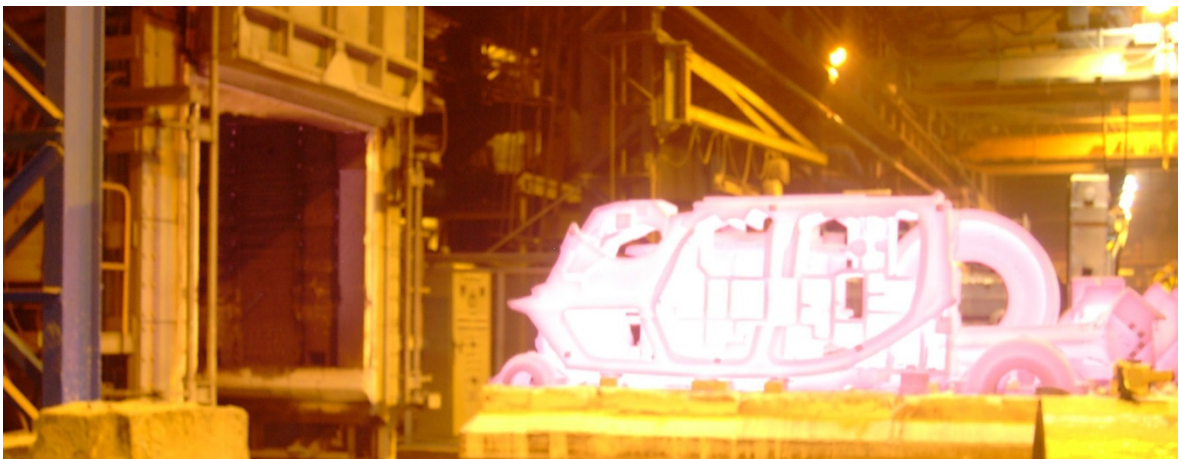
- Vibratory knockout machine
- 8Tn. blasting tunnel
- Robot for grinding
- 5Tn. blasting tunnel
- Feeding head cutter
- Hydraulic press
- Screw press



Our machine shops give us flexibility and better service

TREATMENTS

- Gas furnace with 20 Tons capacity (4700x2800x2200)
- Gas furnace with 5 Tons capacity (2000x1200x1200)
- Electric furnace with 3 Tons capacity (2000x1000x1000)

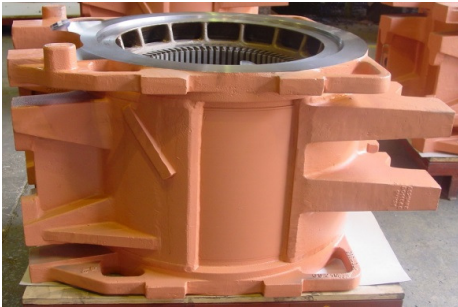


SECTORS

- Semi-automatic serial production from 2 Kg to 100 Kg
- Hand moulding production up to 8 Tons

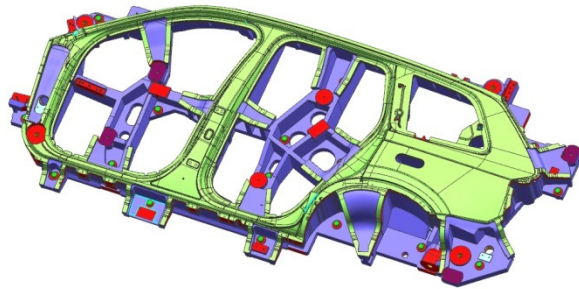
RAILWAY:

Housing box, bearing hangers, engines



AUTOMOBILE AND HEAVY VEHICLES:

Automotive (Die Tools), bearings



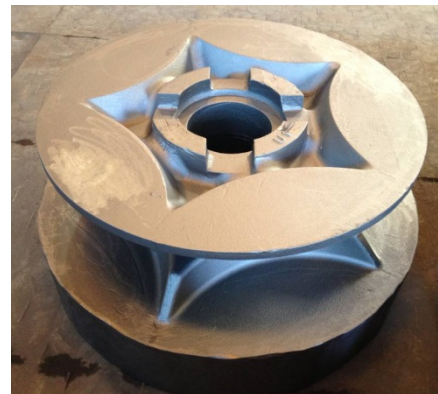
MACHINERY:

Tackles, cog wheels, shellys, wheels



SHIPBUILDING:

Motor frames, chocks, spurling gates, hooks



STRUCTURES FOR CONSTRUCTIONS:

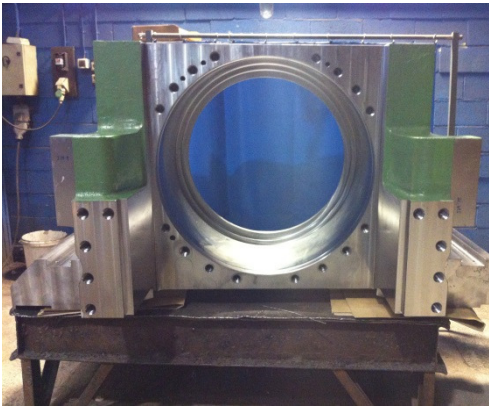
Nodes, sockets, tensioners, cable connectors, cable clamps o columns



ALL KIND OF VALVES AND BALL JOINTS



Steel making



OFFSHORE



MATERIALS

Decades of experience taking maximum care from the scrap selection to the final test, going through the melting and the heat treatments, give us the knowledge of manufacturing with guarantee and reliability.

-High alloyed (Offshore):

G 18 Ni Cr Mo 3-6 (SEW-520 / EN 10340)

G 32 Ni Cr Mo 8 5 4 (1.6570)

G 34 Cr Ni Mo 6 (1.6582)

G 30 Cr Ni Mo 8 (1.6580)



Lower housing
(Shipbuilding)

-Alloyed Steel

X165 CrV12, X100CrMoV, X165 CrMoV12...

-Low alloyed

G34CrMo4, G42CrMo4, G30NiCrMo8...

-Not alloyed

GS30, GS 38, GS 45, GS 52, GS 60, GS 70

-Refractory Steel

ASTM A 217 in its different variables



Pieces for
machinery

-Ferritic Steel for low temperatures

ASTM A 352 in its different variables LCA, LCB, LCC, LC1, LC2, LC3

QUALITY

GUIVISA endeavors to implement quality in all processes and activities through the highest quality standards and installations.



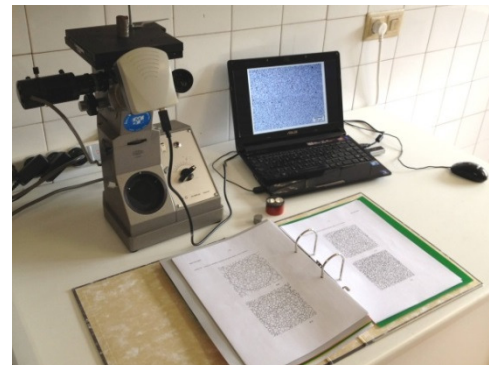
Tensile tests machine



Charpy tests machine



Spectrometer



Metallographic laboratory



Faro - 3D Control System



Ultra Sound
equipment



Magnetic test
installation (TIEDE)



CERTIFICATIONS

ISO 9001:2008
ISO 14001 (Germanischer Lloyd)

